

# THE QUEENS THEATRE

CNR OF GILLES ARCADE  
& PLAYHOUSE LANE







# CONTENTS

Theatre Overview	3
Previous Events	4
Floor Plan	5
Capacity	6
Venue Hire - The Chambers	7-8
Venue Hire - Lounge Bar	9
Venue Hire - Conferences	10
The Queens Lounge Bar	11
Furniture Hire	12-15
Terms & Conditions	16



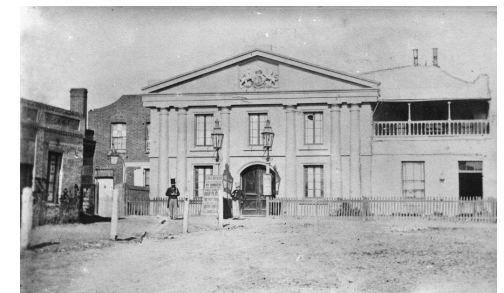
# GWB McFARLANE THEATRES



GWB McFarlane Theatres has managed The Queens in Adelaide since 2018. The Queens is the oldest intact theatre in mainland Australia, built in 1840. The heritage site is owned by the South Australian Government and hosts a variety of events, productions, and companies throughout the year such as Adelaide Festival, Adelaide Fringe, Tour Down Under, Illuminate and the Ruby Awards to name a few.



© 4502. Reproduction rights: State Library of South Australia



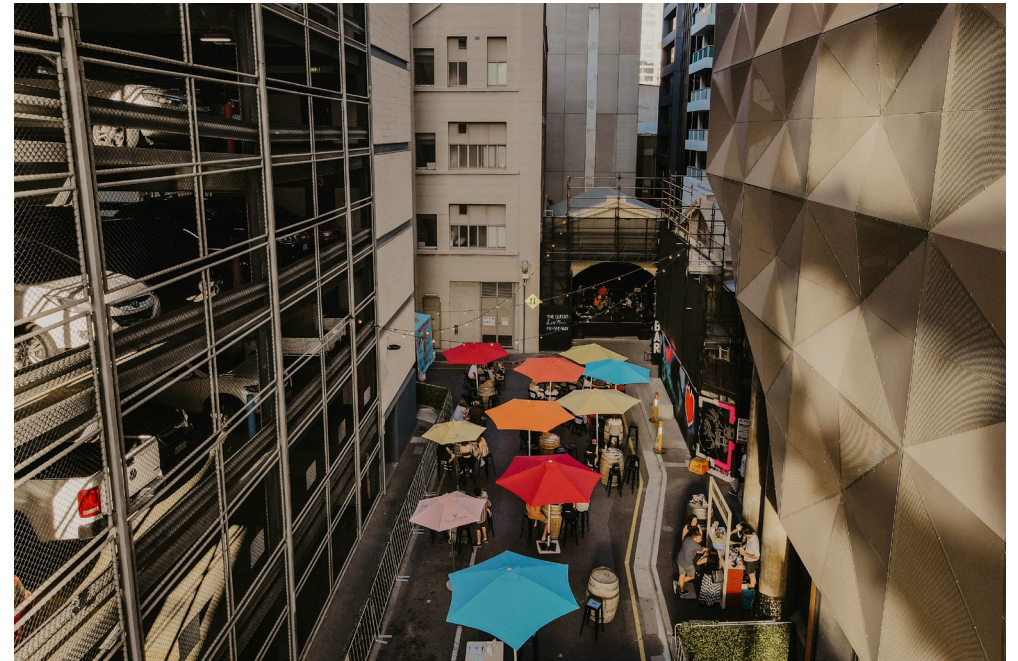


# PREVIOUS EVENTS

Top right  
The Queens Xmas Festival 2021  
Event Design by The Queens

Bottom left  
The Ruby Awards 2021  
Event Design by Ginger Ninja

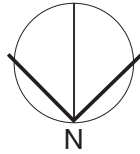
Bottom right  
Gravity & Other Myths season, 2021  
Event Design by GOM





# VENUE FLOOR PLAN

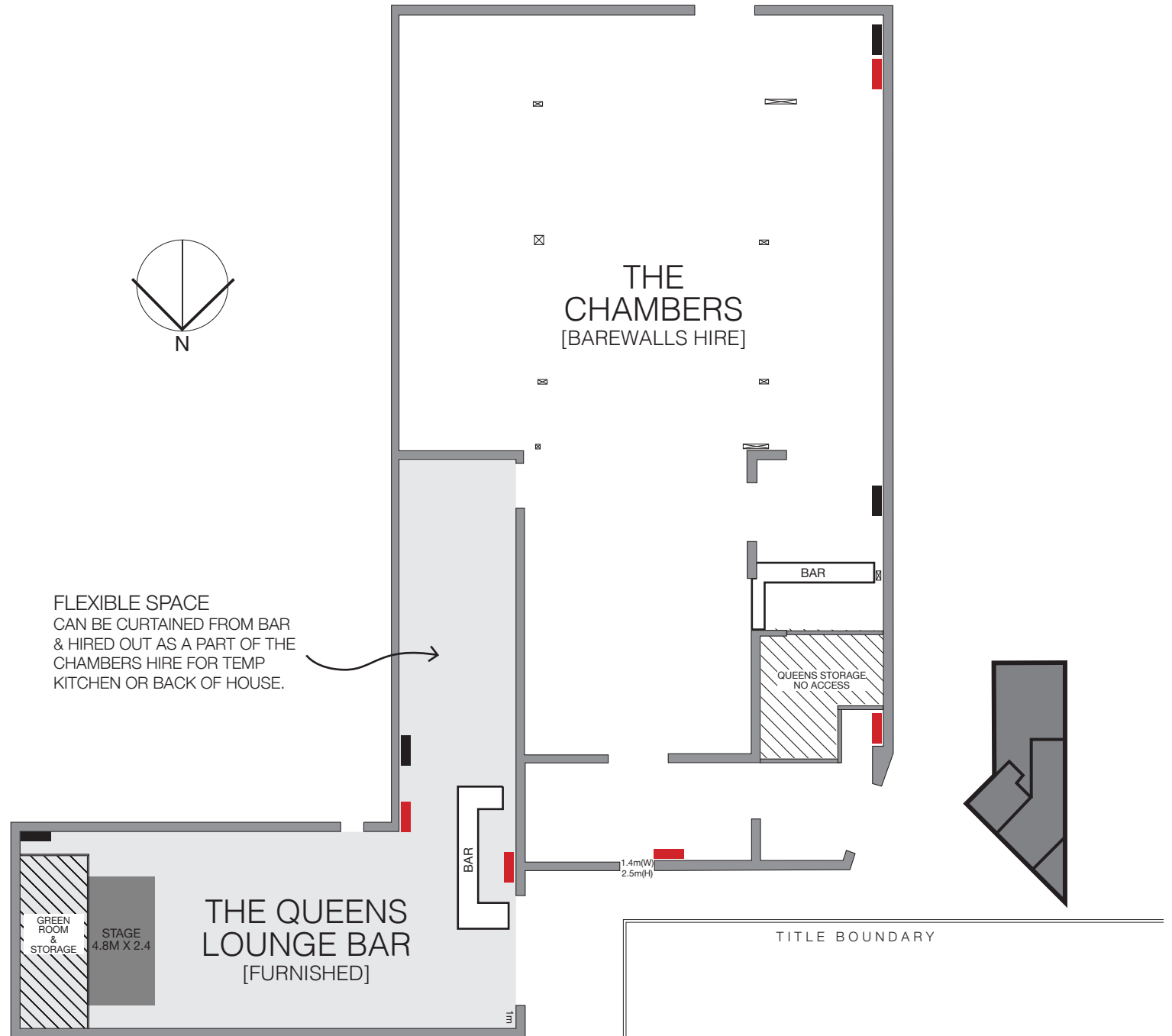
1:100 floor plans with measurements available on request.



FLEXIBLE SPACE  
CAN BE CURTAINED FROM BAR  
& HIRED OUT AS A PART OF THE  
CHAMBERS HIRE FOR TEMP  
KITCHEN OR BACK OF HOUSE.

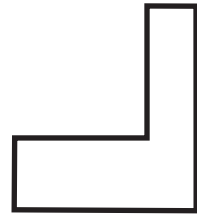


- TOILETS & CLEANERS STORE
- POWER & LIGHTS
- BEAMS
- NO ACCESS
- FIRE EQUIPMENT



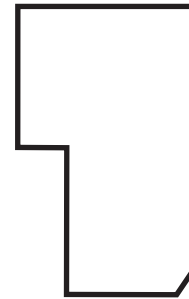


# VENUE AREA & CAPACITY



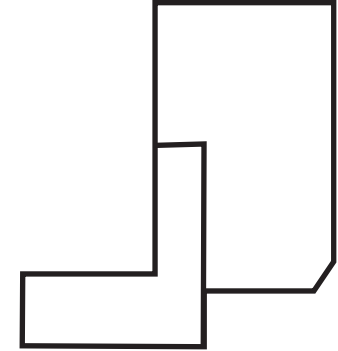
225m<sup>2</sup>

The Stables



540m<sup>2</sup>

The Chambers



765m<sup>2</sup>

Total Capacity of both  
The Stables and The Chambers

Licensed capacity currently stands at 425 persons (including staff) within the entire venue.

Works are currently being undertaken to increase the capacity to 660 persons (including staff) within the entire venue. These works are expected to be completed by mid 2022.

Please refer to SA Health and current COVID restrictions to calculate your event capacity.



# VENUE HIRE THE CHAMBERS

The Queens Chambers (main theatre) is a bare walls venue hire. With the exception of the bar, the hirer is responsible for managing all event requirements including but not limited to staging, lighting, sound, furniture, catering, large waste management and staffing.

The Queens stock, staff and manage all bars within the venue.

Venue Access times:

Sunday to Thursday  
Venue Access 08:00am - 00:30am  
Event Running 09:00am - 00:00am

Friday to Saturday  
Venue Access 08:00am - 02:30am  
Event Running 09:00am - 02:00am

Liquor License hours:

Sunday to Thursday  
Midday - 12am

Friday to Saturday  
Midday - 2am



The Chambers, South end.



The Chambers, South end, dressed for the Ruby Awards (event designer GingerNinja)

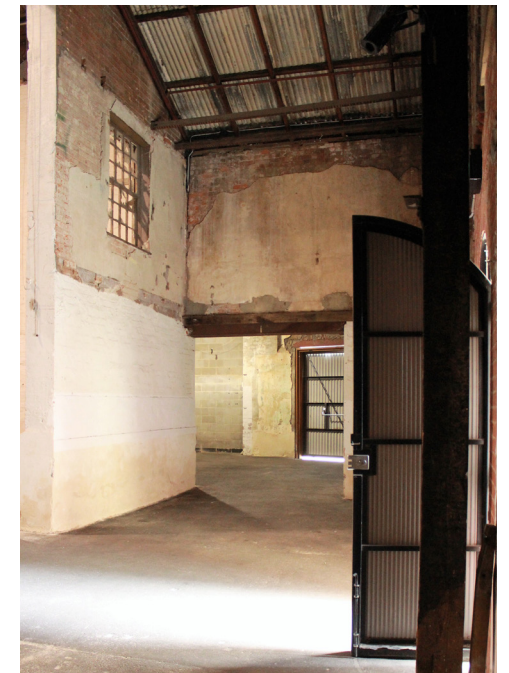


# VENUE HIRE THE CHAMBERS

## Venue Hire Includes

- > Exclusive use of The Chambers
- > Access to 3 phase power
- > Water access within venue
- > Exclusive amenities (male, female, accessible & cleaners store)
- > The use of 3 rigging trusses in The Chambers (2 tonne static rigging per beam evenly distributed)
- > Use of two rigging points per wooden beam in The Chambers (100kg static rigging per beam)
- > Standard work lights

The Queen's Theatre is a Heritage listed building, affixing of any nature (drilling, nailing, gluing) is not permitted in or outside the building.





# VENUE HIRE THE QUEENS LOUNGE BAR

The Queens Lounge Bar is a furnished space that sits within the smaller portion of the venue and is available for hire for private events. The lounge bar is fully furnished with Victorian lounges, wine tables, lamps, festoons, unique pendant lighting and of course, a fully stocked bar.

The bar is stocked, staffed and managed by The Queens, showcasing local brewers, wineries and distillers.

There is a small stage (4.8m x 2.4m), equipped with audio and lighting that is also available for hire.



Looking from the stage towards the bar.



Entrance through to Lounge Bar via main theatre



The ambiance of the Queens Lounge Bar





# VENUE HIRE CONFERENCES



The Queens can facilitate smaller conferences within the Lounge Bar area providing bar services post event. Why not plan your conference on a Friday afternoon, ending at 4pm so your guests can enjoy further networking opportunities over a glass of wine and the live music brought to you by our Friday Night Live sessions.





# THE QUEENS LOUNGE BAR

The Queens Lounge Bar opens on Fridays and provides an intimate performance space supporting local musicians.

We collaborate with our neighbours Sunny's Pizza, to bring freshly cooked pizza's straight to your table.

Sections can be reserved for larger groups.

Opening times  
Friday 4.30pm to 11pm.

Top Left  
Codra Negra

Top Right  
The ambiance of the Lounge Bar

This pic  
Sabor a Cuba

## HOUSE KIT

### AUDIO

1 x Eurodesk SX2442FX, 24 input  
4-Bus Studio/Live Mixer, XENYX Mic  
Preamplifiers, British EQs and Dual Multi FX  
Processor  
2 x Turbosound IQ12, 2500w 2 way 12"  
Speaker, KLARK TEKNIK DSP Tech  
2 x Turbosound IQ18B, 3000w 18"  
subwoofer, KLARK TEKNIK DSP Tech  
2 x QSC CP8 monitor  
3 x Sennheiser wireless mic  
3 x Boom mic stands

### LIGHTING

6 x 12X8, Event Lighting LED par RGBW  
1 x Mantra Lite 24 Fixture Lighting Console

### CABLING

1 x 5 Pin to 3 Pin DMX Cable 1m  
4 x 3 Pin DMX Cable 20m  
4 x 3 Pin DMX Cable 10m  
4 x 3 Pin DMX Cable 5m

### STAGE

4.8m x 2.4m x 600mm





# FURNITURE HIRE



Black Resin Folding Chair  
150 available  
45cm (H)  
First Day: \$4  
Extended hire: +\$4 per week



Coffee Table  
20 available  
50cm (W) x 55cm (H)  
First Day \$8  
Extended hire: +\$8 per week



Black Tolix Stool  
90 available  
75cm (H)  
First Day \$7  
Extended hire: +\$7 per week



Wine Barrel Bar Table  
9 available  
First Day \$20  
Extended hire: +\$20 per week



# FURNITURE HIRE



Gold Bollard  
10 available  
100cm (H) x 32cm (W)  
First Day: \$12 (for 1)  
Extended hire: +\$12 per week



Red Velvet Bollard Rope  
9 available  
150cm (L)  
First Day \$4  
Extended hire: +\$4 per week



Gin Bar/Lemonade Stand  
1 available  
2200cm (H) x 1800cm (W)  
First Day \$120  
Extended hire: +\$120 per week



# FURNITURE HIRE



Rustic Door Table Package  
(1 Table + 2 black benches)  
3 available  
First Day \$60  
Extended hire: +\$60 per week



Wine Barrel Package  
(1 Barrel + 4 tolix stools)  
9 available  
First Day \$40  
Extended hire: +\$40 per week

# EQUIPMENT HIRE



Sliding Door Fridge  
320L  
2 available  
First Day \$150  
Extended hire: +\$150 per week



Double Door Fridge  
688L  
2 available  
First Day \$170  
Extended hire: +\$170 per week



# TERMS & CONDITIONS

GWB McFarlane Theatre agrees to make the Queen's Theatre available to the hirer, in accordance with a venue hire agreement being entered into, subject to the following conditions:

## Fees and charges:

- The proposed event is not such as may reasonably be expected to involve a security risk or danger to the building, fixtures and fittings.
- A refundable bond of \$2000 or \$1000 (event category dependent) is required in addition to the hire fee. The payment of the bond secures the hire date.
- Fee payment of 25% total fee on signing of agreement (payable to GWB McFarlane Theatres) with the balance paid 20 days prior to the commencement of the event.
- In the case of a cancellation, the equivalent of 1 day venue hire is forfeited from the bond, except in the case of Gov. mandated COVID lockdown, the full amount will be refunded if the event can not be rescheduled to a date suitable for both hirer and venue.
- Utility daily fee covers electricity and water usage only.
- Monies can be paid by Bank Transfer only.
- The Queens Theatre has a policy of supporting art's related events. 'Arts related' include events that engage the services of or promote musicians, dancers, acrobatics, performers, visual artists, winemakers/ brewers/distillers/foodagers, artisans and other creative fields.
- Corporate events can secure date(s) with a the payment of a bond; however, booking confirmation can only be given 3 months prior to actual event date. If a corporate event retains the services of or promotes creative fields (e.g. art auctions, live music etc), it will be considered an arts related event.
- If an Arts related event wishes to secure the same dates as a corporate event, if a suitable date cannot be rescheduled for the corporate event, the Bond will be returned in full.

## Set-up and cleaning:

- A GWB Duty Manager will be onsite throughout the duration of the hire to supervise the care of the venue, it is the responsibility of the hirer to organise and supervise all other aspects of occupation.
- For short term bookings, the venue requires an exit clean approx cost \$300 plus GST.
- For long term bookings, a full exit clean including a wet vac, via our preferred supplier Australian Green Clean is expected. Approx cost \$600 plus GST.
- Larger or long term events are required to engage rubbish removal bins from Australian Green Clean.
- Hirers accept full responsibility for set-up and removal of all items from the venue post event, which includes waste removal and tidy of surrounding areas that are part of the Queen's Theatre precinct inside and outside including the removing of cigarette butts.
- Hirers to provide all additional fittings; chairs, tables, staging, sound, heating/cooling and extra lighting within the barewalls hire of the theatre, unless agreed to otherwise.
- Hirers must make their own arrangements for caterers.
- Hirers may not affix fittings to any part of the building using nails, bolts or any sharp instrument or through drilling or cutting into any parts of the structure.
- Covers to interpretative boards must not be removed without prior permission.
- Fire fighting equipment must not be removed or used for activities other than designated functions. The fire hose must not be used for washing out the theatre.
- Exit signs shall never be covered or blocked.

- Vehicles may not be driven and parked into theatre indoor areas.
- No Pyro technics can be used in the venue without approval by Venue Manager.
- No Glitter or confetti to be use in or outside of venue.

## Licenses and insurance:

- Hirers must apply for all necessary licenses, insurance (\$10 million public liability) and permits as required under the terms and conditions of the Contract.
- GWB McFarlane Theatres Pty Ltd hold the liquor license for the venue and take on the responsibility and financial risk associated with running the bar, retaining all revenue received from sale of stock.

## Event documentation

The hirer must provide the following to queens@gwbmcfarlane.com 10 business days prior to bump in:

- > Contact list
- > Production Schedule of activity and times
- > Event Plan
- > Risk Assessment
- > Copy of Public Liability Insurance
- > Covid Management Plan
- > APRA license (if applicable)
- > Council permits (where applicable)